

**NO MATTER THE COMPLEXITY.  
NO MATTER THE SIZE.**



# **TABUBIL ENGINEERING LTD CAPABILITY STATEMENT**

CONSTRUCTION  
ENGINEERING AND DESIGN  
MAINTENANCE  
ELECTRICAL  
MECHANICAL  
HARDWARE  
MACHINING AND FABRICATION



**WE'LL GET THE JOB DONE.**





PROUD TO BE A MAJOR ENGINEERING AND  
CONSTRUCTION CONTRACTOR.



**DOING GREAT THINGS. EVERYDAY.**





**04-08**

About Tabubil  
Our company structure  
Our construction division  
Our maintenance division  
Hydro Blasting  
Our electrical division

**09-14**

Steel fabrication and erection  
Our machine shop  
Our engineering and design division  
Our hardware, mechanical and wholesale departments  
Significant projects completed  
Our major customers

**15-20**

Our equipment hire division  
Labour hire  
Staff development and training  
Our OH&S commitment  
Our accommodation units for staff  
Our contact details



**North Fly Administration Building**



**OKTedi Mine**

**Flotation Crane Replacement.**

Delivered on time.

Delivered within budget.

LTI free.



# About Tabubil Engineering.

**Professionally managed, land owner's premier engineering company based in Tabubil and a large OTML contractor to Ok Tedi Mining (OTML) .**

**OUR HISTORY** Starting from humble beginnings in 1984, Tabubil Engineering was established under the Ok Tedi Mining Ltd business development program with the partnership of Mr. Wayne Robin Bishop (50%) and Migalsim Village Business Group (50%). Migalsim Business Group has now divided to form two separate entities namely Amgy Business Group and Imiba Business Group. In 2008, Mr. Wayne Robin Bishop's shares were acquired by Mineral Resources Star Mountains Limited. Tabubil Engineering Ltd is now a 100% locally owned company.

**OUR PEOPLE** All of our staff are employed under Individual Workplace Contracts which other Tabubil-based organizations are adopting. These contracts provide the employee and management with clear guidelines to critique and reward performance.

Under the recent audit for all OTML contractors for compliance throughout all business units, we are proud to have received the top score of 99.4%.

**OUR PROGRESS** We are steadily growing which has been complemented by our recent expansion involving Hore Binkia Engineering Ltd in the establishment of Highway Transport Ltd (HTL). HTL provides transportation services to OTML, Tabubil Engineering Ltd, Hore Binkia and to other companies operating in the Western Province.

The most recent expansion is the establishment of Fubilan Security Services (FSS) in partnership with Fubilan Catering Services.

“Employing more than 350 workers as of 2017, with equipped workshops for our various divisions, including a number of mobile heavy and light equipment, as well as a successful retail/wholesale hardware store”



**FROM HUMBLE BEGINNINGS.**  
**SINCE 1984.**



# Our structure.

## Our partner companies, leadership and figures.

### GROUP COMPANIES AND THEIR EXPERTISE

We are one of the group companies of Mineral Resource Star Mountain. The companies in this group are:

- **Tabubil Engineering Limited** – An Engineering company supplying labour and engineering services to OTML in Tabubil.
- **Fubilan Catering Services** – Catering services to OTML and contractors in Tabubil.
- **Highway Transport Limited** – Transport company supplying services to OTML and others in Tabubil and Port Moresby.
- **Fubilan Security Services Ltd** – Providing security guards in Tabubil and Port Moresby.
- **Weigh Inn Hotel** – Providing boarding and lodging in Port Moresby.

### MANAGING TEAM

Mr. Joseph Clarke – General Manager - TE, HTL, FSS  
Mr Rick O'Donoghue – Operations Manager  
Mr. Madaha Doriga – Manager, OHS  
Mr. Ray Agoot – Engineering and Design Manager  
Mr Edwin Galego – Hardware Manager

2017 EMPLOYEE  
NUMBERS

400+ Employees

REVENUE  
PEAK

PKG 120,000,000



**THE BEST PEOPLE IN BUSINESS.**

**THINKING FOR THE FUTURE.**



**DEDICATED TO PROVIDING THE HIGHEST QUALITY SERVICES AND SPECIALTY EQUIPMENT.**



**ONLY THE BEST FOR OUR CUSTOMERS.**



# Construction and Maintenance.

The core business of our construction and maintenance division is the refurbishment and upkeep of domestic, commercial and industrial projects.

The projects that we have completed have been of various sizes and complexities.

Some of these projects have included a pump station complete with pumps and building, storage tanks, as well as roofing and equipment installation at TPP and even floatation buildings for mine waste and tailings.

One of our many major projects is Tabubil's first of its kind, country club. We were engaged to build a country club to Australian standards. Today, the building is a major attraction for the town of Tabubil.

This project was completed LTI free.



“Our business capacities range from a 24-hour breakdown service call, right through to shutdowns and multi-million PKG projects.”



**NO MATTER THE PROJECT.**

**WE ARE READY AND ABLE.**

# Hydroblasting and Electrical.

## Our hydroblasting department.

The core business of our construction and maintenance division is the refurbishment and upkeep of domestic, commercial and industrial projects.

**“Many of our projects include works for maintenance of workshops and other building facilities.”**

Our Hydro blasting and Corrosion Protection Section commenced operations in 2002 utilising a Hammelman 20,000 PSI unit and a Jetin 15,000 PSI unit with several small units operating between 4.000 and 7.000 PSI.

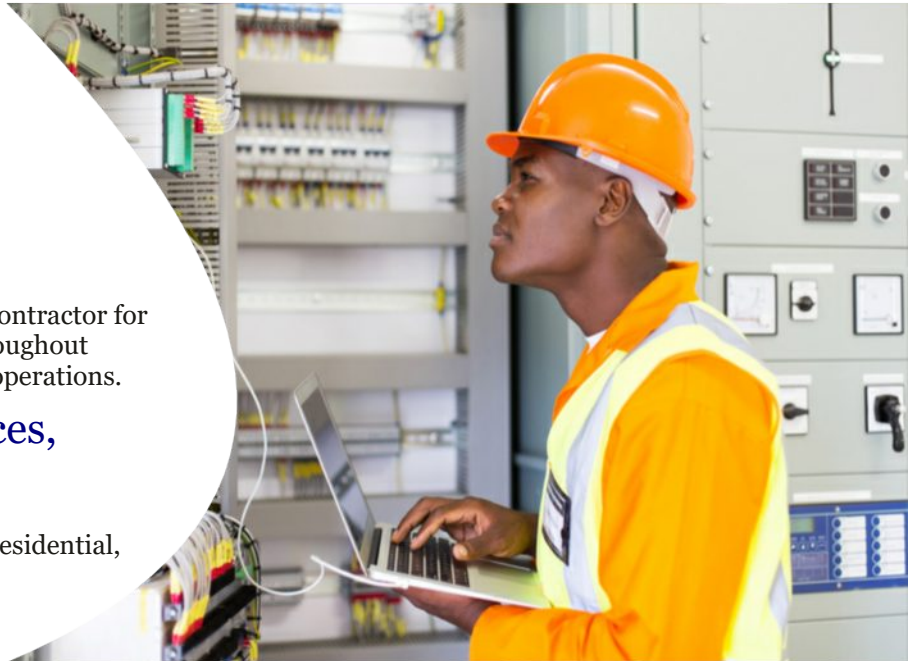


## Our electrical department.

Our electrical division is the preferred electrical contractor for OTML. Assisting in all major electrical works throughout infrastructure support services, mill and mining operations.

**“Infrastructure support services,  
mill and mining operations.”**

We can assist with any project, whether it be for residential, commercial, mining or industrial purposes.




**READY TO START WORK.  
TODAY.**



# Steel Fabrication/Erection and our Machine Shop.

Our Steel Fabrication and Erection Department undertakes piping and structural repairs as well as performing both manufacturing and site installation tasks involving general fitting and turning, milling, lathing and drilling. Many of these applications are for:

- Tray repairs
- Dozer rebuilds
- Dozer track frames
- Tank relining
- Tank rebuilds



“Our experience in the past has seen us work on a new mine workshop, a mine electrical upgrade project as well as various shut down works.”




Our machine shop fabricates hydraulic hoses in various sizes from up to 3" 1, 2 and 4 wires.

Our work covers:

- Frontend axle assemblies
- Final drives
- Brake Groups
- Circle rebuilds
- Dewatering pump rebuilds



**WHERE QUALITY MEETS EFFICIENCY.**  
**RIGHT DOWN TO THE FINER DETAILS.**



# Engineering and Design.

Our national and expat design team consist of multiple certified Civil Engineers together with a Mechanical Engineer, Structural Engineer and a Draftsman.

Our engineering division has also coincided with the OTML design team for many years through all business unit departments including Operations, Mill, Mine, ISS, Engineering and Projects.



Leak Tanks



TPP Building project



Kiunga Government House project



**HIGHLY SKILLED ENGINEERING TEAM.**  
**INNOVATION AT THE FOREFRONT.**



# Hardware, Wholesale and Mechanical Departments.



## Our hardware and wholesale department.

Our Hardware Retail and Wholesale Division is operated under the name of Tabubil Hardware. This division was established in 1991 and has consistently performed very well every year since its commencement.

Tabubil Hardware still remains the largest outlet for general hardware and industrial products in the western province.

Ok Tedi Mining Limited (OTML) vendor held stock operation is handled through this division, by procuring and storing all required materials for OTML.

## Our mechanical department.

Our Vehicle Maintenance Division whilst performing general repairs for private customers and other contracting companies, primarily supports our fleet of 58 which include:

- 7 x Twin Steers
- AT20 Franna
- Tadano 25T Slew Crane
- 2 x Side Lifter Twin Steer Truck
- Fleet vehicles
- Service vehicles
- Forklifts 1 x 7t, 2 x 2.5T



**RESOURCES AT OUR DISPOSAL.**  
**AVAILABLE ANYTIME.**



A COMMITMENT TO OUR NATURAL WILDLIFE.  
CO-HABITATION AT ITS FINEST.



WE ARE TABUBIL  
ENGINEERING.





New Mine Workshop

- **Mine electrical upgrade package**
- Merlees power supply change out
- **Centre Pit dewatering project**
- Re grind 22T gantry R=replacement
- **Flotation 15T gantry change out**
- PECON camp relocation and construction
- **OTML major mains power supply**
- Powerhouse main valve replacement
- **5 x 108 man donga construction**

# Major projects.



PECON Camp Relocation

- **Tabubil Sports and Country Club**
- Tabubil Hospital - housing and accommodation
- **4 x two story duplexes for Star Mountain Institute of Technology**
- OTML Single woman's two story accommodation
- **OTML Single men's two story accommodation**
- Two story mine inpit administration building
- **Tabubil Automotive Workshop**
- Tabubil Woman's Resource Centre
- **Teleforman School and Accommodation**
- Transformer yard TPS
- **TPS Electrical control rooms**
- CAT D11 complete strip and rebuild x 5
- **New mine workshop**



**NO MATTER THE COMPLEXITY.**  
**NO MATTER THE SIZE.**

# Our major customers.

## CLIENT FOCUSED

Ever since we have established ourselves in the market as a leader in providing a range of engineering, construction and maintenance services, it has been a key focal point of our company to ensure that the highest quality of services is consistently delivered and that our customer's needs and requirements are at the forefront of everything that we do.

We continue to maintain and nurture the relationships that we have with our customers and we are always looking for ways to continually improve so that we can contribute greater value now and in the future.

### MINING AND ENERGY

Metso  
Ok Tedi Limited  
Anglo American  
Deepcore Drilling  
Dredec  
Oil Search  
Dredec  
Orica  
Puma Energy  
MRDC

### COMMUNITY

| Ok Tedi Development Foundation

### ENGINEERING

| Sun Engineering  
Downer EDI  
Monodelphus

### LOGISTICS

| Kutabu Transport



**BACKED BY A TRACK RECORD OF SUCCESS.**  
**OUR FOCUS HAS ALWAYS BEEN ON EXCELLENCE.**



The image features a low-angle shot of two workers in hard hats and safety vests, silhouetted against a vibrant sunset sky. The worker on the right is pointing upwards towards a high-voltage power line tower. The sky transitions from a deep blue at the top to a bright orange near the horizon. The overall mood is one of dedication and commitment to the engineering profession.

**A DEDICATED WORKFORCE.  
PASSIONATE AND COMMITTED.**

**WE ARE TABUBIL  
ENGINEERING.**

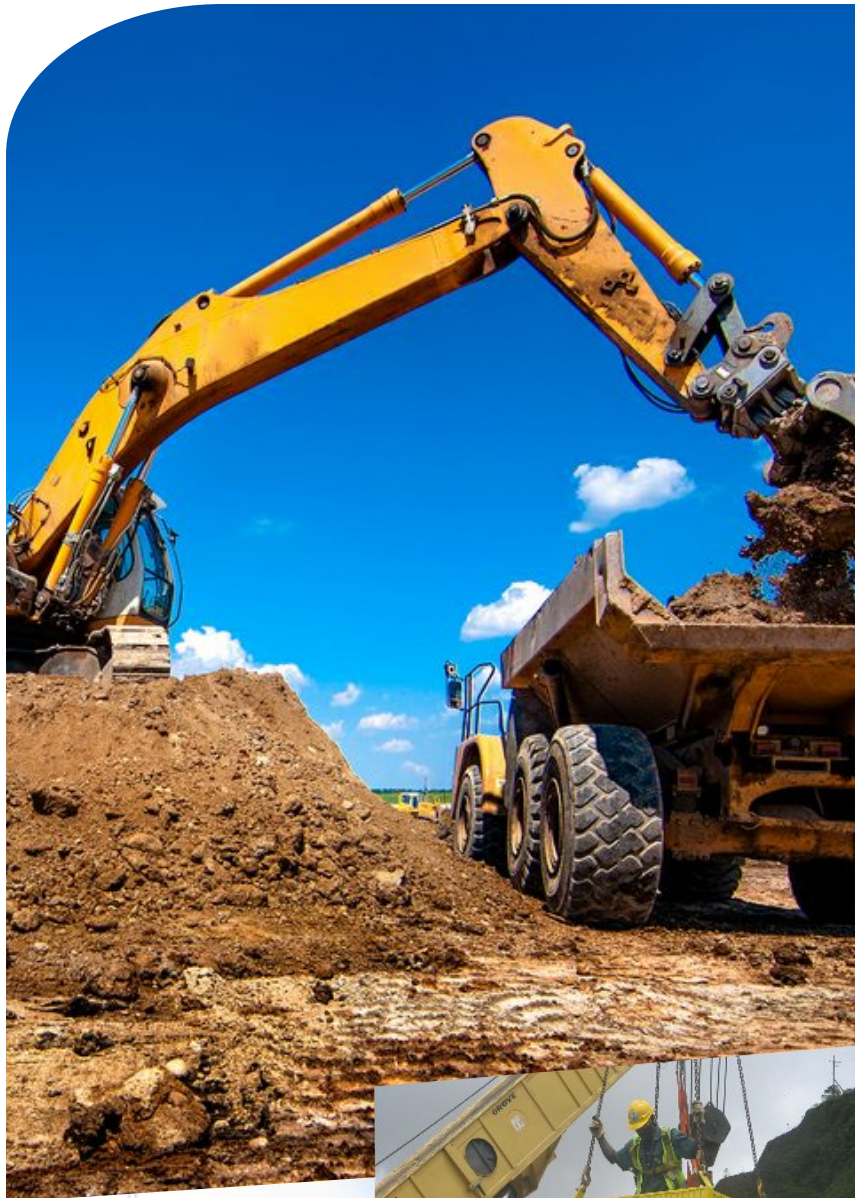
# Equipment hire division and specialised equipment.

Our equipment hire division currently has a wide range of equipment ready to handle any next big project.

Our specialised equipment includes twin steer flat-bed trucks, boom trucks, cranes, scissors lift, forklifts, backhoes, welding machines, compressors, UHP water blasters, abrasive blast and paint equipment, generators, light, medium and ridged vehicles to be placed on hire.

## **Specialised Equipment:**

- Various High Torque Equipment
- Sunnen HTB 4000 SNC Honing machine with MPS tooling
- Ryco RC48D 1/4 " - 3" Crimper
- 110T Press
- Hydraulic press 60T
- Misal Milling Machine
- Berico Milling Machine
- Horizontal Borer Union
- Horizontal Borer Sinada
- KTF Drill Press
- Kao Miling Radial drill
- 350 Super Thomas Coldsaw
- Multi 70 Punch & Shears
- 70T hydraulic double cylinder
- Yam centre Lathe
- AC Russian Lathe
- Victor Centre Lathe
- Cupid Centre Lathe
- TOS Lathe
- Band Saw
- Ajax Shaping Machine
- Klopp Shaping Machine
- Hoffman Mobile Borer Plus tooling
- Guillotine
- Forming press 32mm
- Plate Roller
- Plasma cutting



**THE RIGHT EQUIPMENT FOR THE RIGHT JOBS.**  
**REGULARLY MAINTAINED AND SERVICED.**



# Labour hire and training.

From Boilermakers to Welding Inspectors. A highly skilled workforce, specialising in all aspects of engineering and construction works equipped to make a difference. Working collaboratively toward a common goal. Ready and able. Everyday.

We take the professional development of our staff very seriously, which is why we are committed to equipping them with the skills needed to continue to make a greater contribution to our operations.

Tabubil engineering are affiliated with ColJoy Training Services, a registered training organisation in central QLD.

With the support of fully accredited trainers, we have an extensive RII resource industry and infrastructure program in place to train current and future national, expatriate employees.

We have a comprehensive apprenticeship program and we strive to provide the best training for the local landowners.

## **Breakdown of Apprentices as of 2017:**

- Boilermaker/Welder **10**
- Fitter Machinist **9**
- Heavy Equipment Fitters **7**
- Motor Mechanic **2**
- Industrial Electrician **4**
- Auto Electrician **4**
- Carpentry **4**
- Plumbing **1**
- Ref Mechanic **1**

**Total 42 Apprentices.**

**A COMPREHENSIVE  
APPRENTICESHIP  
PROGRAM.**

**CREATING LEADERS  
OF TOMORROW.**



# Our commitment to OH&S and the environment.

We have an Occupational Health, Safety and Environment Department, which is entrusted with the implementation of our Occupational Health, Safety and Environment policy.

We maintain a proactive approach to continually improving the safety standards of our operations.

We are also very much committed to performing our operations in a manner that does not impinge on the environment and the natural habitat of Papua New Guinea.

In 2016, an independent audit was conducted on every contractor in the western province. We score 98.9% which was the highest in the entire province. This covered:

- Safety compliance
- Environmental compliance
- Financial compliance
- Industrial relations
- Human resources
- QA/QC



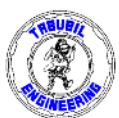
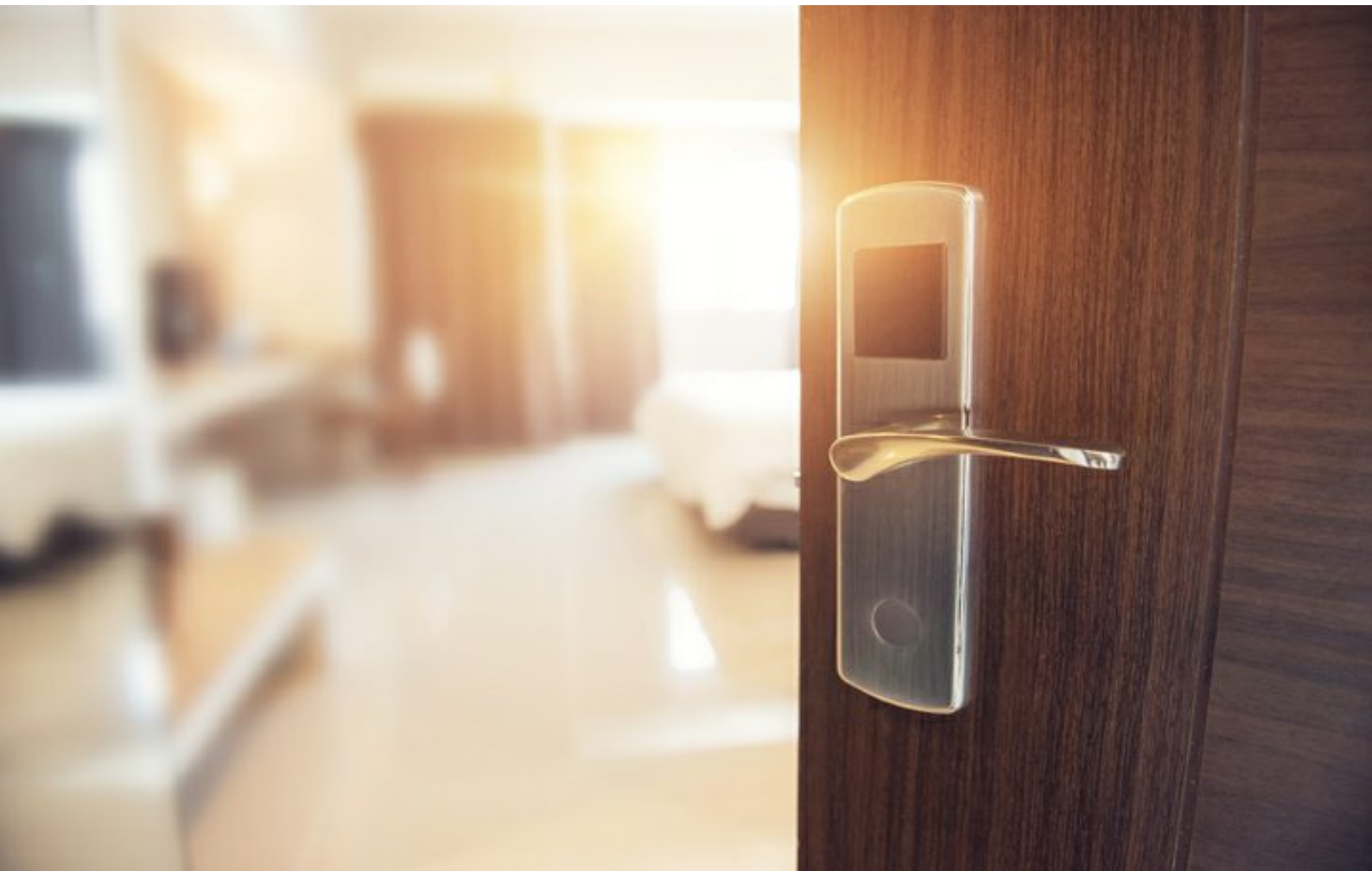
**A SAFETY FIRST WORKPLACE CULTURE.  
INTEGRAL TO OUR OPERATIONS.**



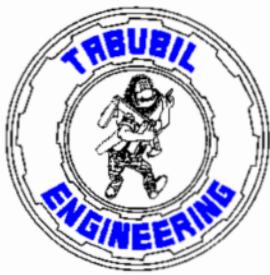
# Accommodation.

**HOUSING FOR OUR WORKFORCE** We have ample camping facilities to house our workforce and it can accommodate 250 people comfortably.

The camp consists of 27 executive level rooms which are available for hire.



**COMFORTABLE HOUSING FOR OUR STAFF.  
EQUIPPED WITH THE NEEDED FACILITIES.**



**Tabubil Engineering Pty Ltd**

Section 11, Allotment 14 • Kissan Street  
PO Box #431 • Tabubil, Western Province

**Ph** || (675) 7411 0767

**Fax** || (675) 7411 0767

**IPA Registration** || 1-8521

**TIN** || 500003462

**Incorporation Date** || 23rd March 1982

## CONTACT

**Joseph Clarke** | General Manager • gm@te.com.pg • (675) 7411 0767/70294459

**Rick O'donoghue** | Operations Manager • opsmanager@te.com.pg • (675) 7411 0767/79266260

**Madaha Doriga** | OHS Manager • te.safety@te.com.pg • (675) 7411 0767/7376 3729

**Edwin Galego** | Hardware Manager • hardware\_manager@te.com.pg • (675) 7411 0767/7331 3955